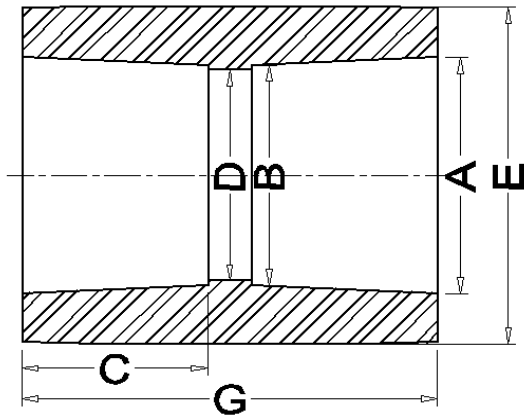


## Socket Fusion Couplings



SOCKET FUSION COUPLING DIMENSIONS						
Size	A	B	C	D	E	G
3/4" x 3/4"	1.020	1.012	0.984	0.933	1.457	2.165
1" x 1"	1.275	1.267	0.984	1.150	1.772	2.165
1-1/4" x 1-1/4"	1.620	1.612	0.984	1.457	2.205	2.165
1-1/2" x 1-1/2"	1.860	1.849	0.984	1.693	2.480	2.165

PE3408/4710/100 SOCKET FUSION COUPLINGS				
Size	Part Number	Box Quantity	Unit Weight (kg)	Unit Weight (lbs)
3/4" x 3/4"	SPC44	300	0.030	0.066
1" x 1"	SPC55	200	0.048	0.106
1-1/4" x 1-1/4"	SPC66	200	0.067	0.147
1-1/2" x 1-1/2"	SPC77	200	0.800	1.760

All GES socket fusion couplings are manufactured & tested to ASTM D2683 standards.  
The resin used in the production of all GES fittings meets or exceeds ASTM D2513 standards.  
Dimensions and weights for reference only.