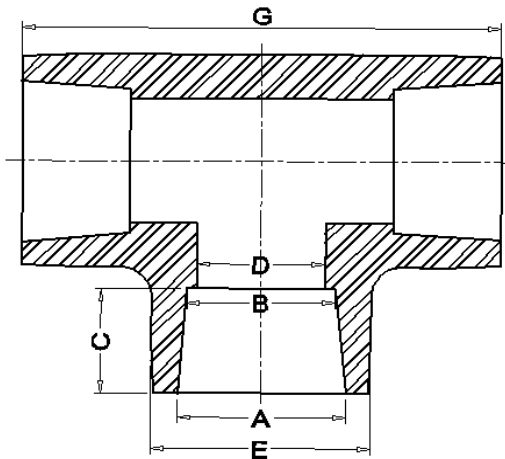


Socket Fusion Tees



SOCKET FUSION TEE DIMENSIONS						
Size	A	B	C	D	E	G
3/4" x 3/4" x 3/4"	1.020	1.012	0.787	0.933	1.457	3.268
1" x 1" x 1"	1.280	1.268	0.787	1.150	1.772	3.819
1-1/4" x 1-1/4" x 1-1/4"	1.626	1.614	0.984	1.457	2.205	4.213

PE3408/4710/100 SOCKET FUSION TEES				
Size	Part Number	Box Quantity	Unit Weight (kg)	Unit Weight (lbs)
3/4" x 3/4" x 3/4"	SPT444	200	0.066	0.145
1" x 1" x 1"	SPT555	100	0.114	0.251
1-1/4" x 1-1/4" x 1-1/4"	SPT666	100	0.169	0.372

All GES socket fusion tees are manufactured & tested to ASTM D2683 standards. The resin used in the production of all GES fittings meets or exceeds ASTM D2513 standards. Dimensions and weights for reference only.