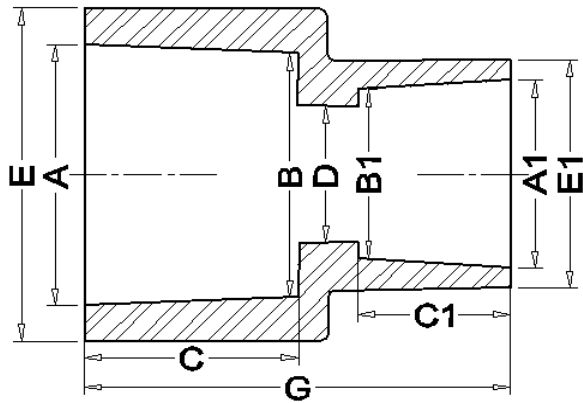


## Socket Fusion Reducers



| SOCKET FUSION REDUCER DIMENSIONS |       |       |       |       |       |       |       |       |       |       |
|----------------------------------|-------|-------|-------|-------|-------|-------|-------|-------|-------|-------|
| Size                             | A     | B     | C     | D     | E     | A1    | B1    | C1    | E1    | G     |
| 1" x 3/4"                        | 1.280 | 1.268 | 0.787 | 0.933 | 1.693 | 1.020 | 1.012 | 0.748 | 1.417 | 2.008 |
| 1-1/4" x 1"                      | 1.626 | 1.614 | 0.906 | 1.150 | 2.205 | 1.280 | 1.268 | 0.906 | 1.693 | 2.008 |
| 1-1/2" x 1-1/4"                  | 1.860 | 1.849 | 0.905 | 1.687 | 2.480 | 1.620 | 1.612 | 1.520 | 2.229 | 2.008 |

| PE3408/4710/100 SOCKET FUSION REDUCERS |             |              |                  |                   |            |
|--|-------------|--------------|------------------|-------------------|------------|
| Size                                   | Part Number | Box Quantity | Unit Weight (kg) | Unit Weight (lbs) | Unit Price |
| 1" x 3/4"                              | SPC54       | 250          | 0.026            | 0.057             | 3.67       |
| 1-1/4" x 1"                            | SPC65       | 200          | 0.054            | 0.119             | 3.76       |
| 1-1/2" x 1-1/4"                        | SPC76       | 200          | 0.069            | 0.152             | 6.68       |

All GES socket fusion reducers are manufactured & tested to ASTM D2683 standards. The resin used in the production of all GES fittings meets or exceeds ASTM D2513 standards. Dimensions and weights for reference only.