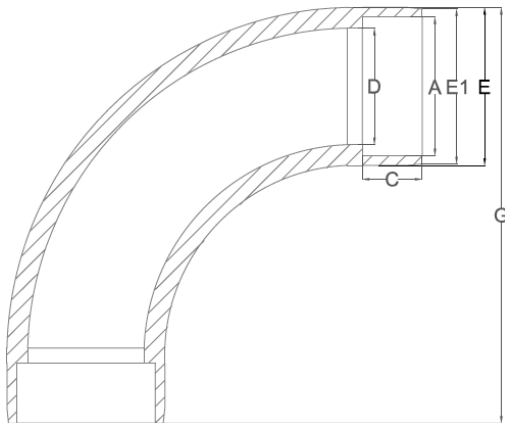


Geo-Glide 90 Elbow

Geo-Glide fittings are the new standard in high performance, labor-efficient, and professional looking geothermal HDPE piping systems. Designed to facilitate the speed and appearance of insulated piping, the large radius also contributes to a high performance and low pressure drop flow path for the geothermal fluid.

Key Features

- Thin wall with tapered leading edge & patent pending “ribbed” design to facilitate sliding insulation onto piping
- Generous “Sweep” radius to reduce pressure drop and prevent “bunching up” of insulation
- Long service life: 50+ years expected lifetime
- Excellent resistance to slow crack growth (SCG), corrosion, and abrasion
- Textured surface for enhanced gripping
- 50 Year Limited Warranty



GEO-GLIDE 90 ELBOW DIMENSIONS						
Size	A	C	D	E1	E	G
3/4" x 3/4"	1.020	0.717	0.837	1.180	1.233	3.616
1" x 1"	1.275	0.784	1.052	1.489	1.542	4.271
1-1/4" x 1-1/4"	1.618	0.956	1.360	1.739	1.839	4.839
1-1/2" x 1-1/2"	1.860	0.968	1.554	2.099	2.152	5.576
2" x 2"	2.335	1.000	1.943	2.581	2.634	6.929

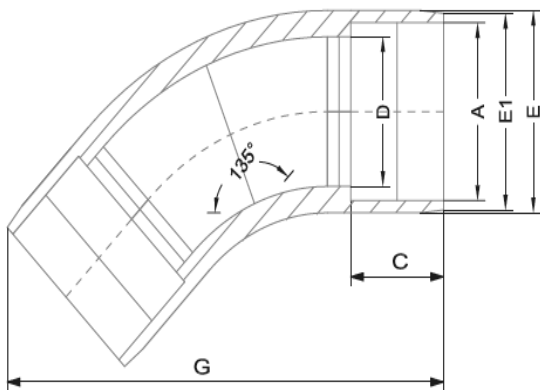
The resin used in the production of all GES fittings meets or exceeds ASTM D2513 standards.

Geo-Glide 45 Elbow

Geo-Glide fittings are the new standard in high performance, labor-efficient, and professional looking geothermal HDPE piping systems. Designed to facilitate the speed and appearance of insulated piping, the large radius also contributes to a high performance and low pressure drop flow path for the geothermal fluid.

Key Features

- Thin wall with tapered leading edge & patent pending “ribbed” design to facilitate sliding insulation onto piping
- Generous “Sweep” radius to reduce pressure drop and prevent “bunching up” of insulation
- Long service life: 50+ years expected lifetime
- Excellent resistance to slow crack growth (SCG), corrosion, and abrasion
- Textured surface for enhanced gripping
- 50 Year Limited Warranty



GEO-GLIDE 45 ELBOW DIMENSIONS						
Size	A	C	D	E1	E	G
1-1/4" x 1-1/4"	1.615	1.000	1.360	1.786	1.839	4.696

Geo-Glide 45 Elbows will be available in 1", 1 1/2", and 2" sizes in 2013.

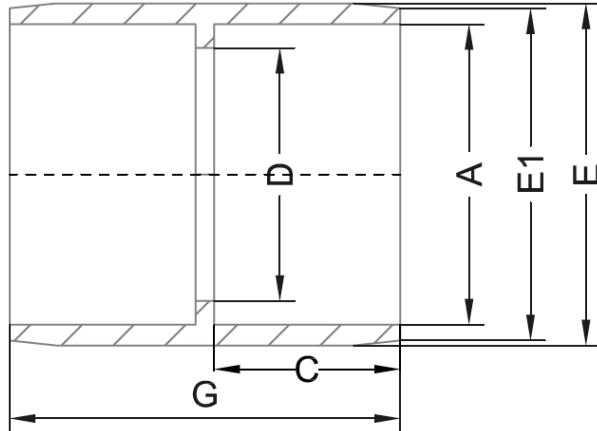
The resin used in the production of all GES fittings meets or exceeds ASTM D2513 standards.

Geo-Glide Coupling

Geo-Glide fittings are the new standard in high performance, labor-efficient, and professional looking geothermal HDPE piping systems. Designed to facilitate the speed and appearance of insulated piping, the large radius also contributes to a high performance and low pressure drop flow path for the geothermal fluid.

Key Features

- Thin wall to facilitate sliding insulation onto piping
- Long service life: 50+ years expected lifetime
- Excellent resistance to slow crack growth (SCG), corrosion, and abrasion
- Textured surface for enhanced gripping
- 50 Year Limited Warranty



GEO-GLIDE COUPLING DIMENSIONS						
Size	A	C	D	E1	E	G
1-1/4" x 1-1/4"	1.615	0.968	1.360	1.786	1.839	2.200

Geo-Glide Couplings will be available in 1", 1 1/2", and 2" sizes in 2013.

The resin used in the production of all GES fittings meets or exceeds ASTM D2513 standards.